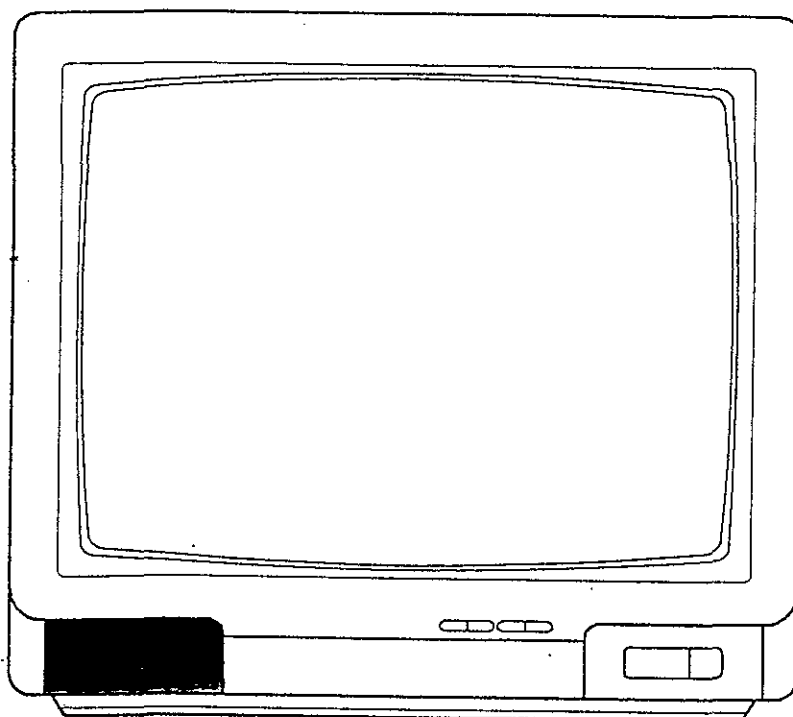


TEAC

SERVICE MANUAL

SOLID STATE
20" COLOUR TELEVISION
RECEIVER



MODEL: CT-M488
PAL - BG W/SCART ONE CHIP 1C

PHILLIPS 1C

SPECIFICATION

| | | | |
|--------------------------|---|--|-------|
| SYSTEM | : | PAL-B/G | |
| DESTINATION | : | | |
| CHANNEL COVERAGE VHF LOW | : | A - C | CH |
| VHF HIGH | : | D - H2 | CH |
| UHF | : | 21 - 69 | CH |
| FREQUENCY RANGE VHF LOW | : | 53.75 - 82.25 MHz | |
| VHF HIGH | : | 175.25 - 224.25 MHz | |
| UHF | : | 471.25 - 855.25 MHz | |
| SCANNING LINES | : | 625 | LINES |
| HORIZONTAL | : | 15625 | Hz |
| VERTICAL | : | 50 | Hz |
| IF FREQUENCY | : | | |
| VIDEO | : | 38.9 | MHz |
| SOUND | : | 33.4 | MHz |
| CHROMA | : | 34.47 | MHz |
| VISION/SOUND SEPARATION | : | 5.5 | MHz |
| SENSITIVITY | : | | |
| VHF LOW | : | 45 | uV |
| UHF HIGH | : | 46 | uV |
| UHF | : | 48 | uV |
| OUTPUT POWER MAXIMUM | : | 1500 | mW |
| 10% THD | : | 1200 | mW |
| CRT | : | 20" DIAGONAL, 90 DEGREES DEFLECTION ANGLE | |
| SPEAKER | : | 2" x 3 1/2" 16 OHM 3W x 1 | |
| ANTENNA IMPEDANCE | : | 75 OHM | |
| POWER CONSUMPTION | : | 70 WATTS | |

VIF ALIGNMENT

- A. Preparation step. (see fig 1.)
1. Connect Sweep Generator to tuner test point and ground.
 2. Connect 13v B+ Bias Voltage to C406 (+) and Ground.
 3. Connect A.G.C. Bias Voltage PIN 48 of U201
* A.G.C. Bias Voltage can't over 5V.
 4. Disconnect the soldering pads 'H' and 'I'.

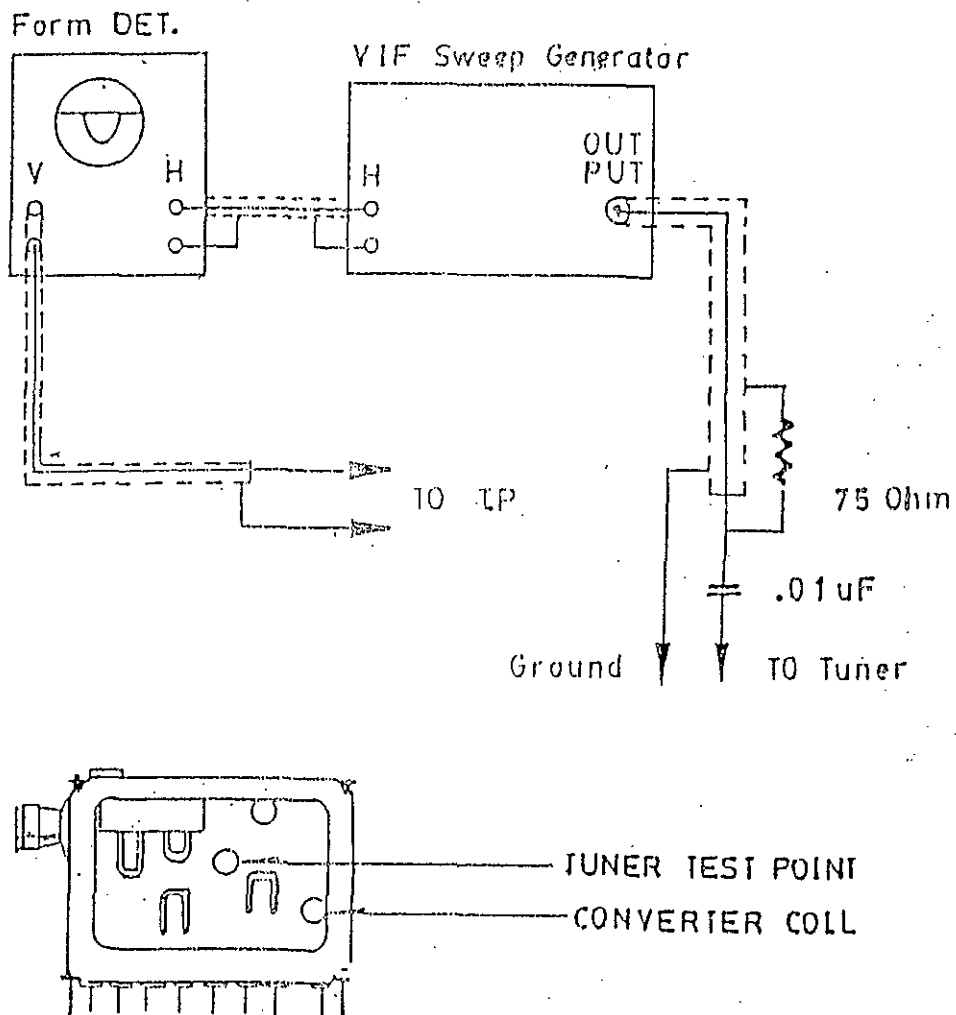


FIG 1.

AFC ALIGNMENT

1. Connect 1K OHM resistor between PIN '1' and PIN '10' of U201.
2. Calibrate the division of waveform detector equal to 10 mV per div.
3. The output of sweep generator should be -50dB.
4. Connect the waveform detector to TP203 and Ground.
5. Adjust A.G.C. Bias until the waveform just saturate. (about 3V)
6. Adjust L204 to obtain the waveform as Fig 2.

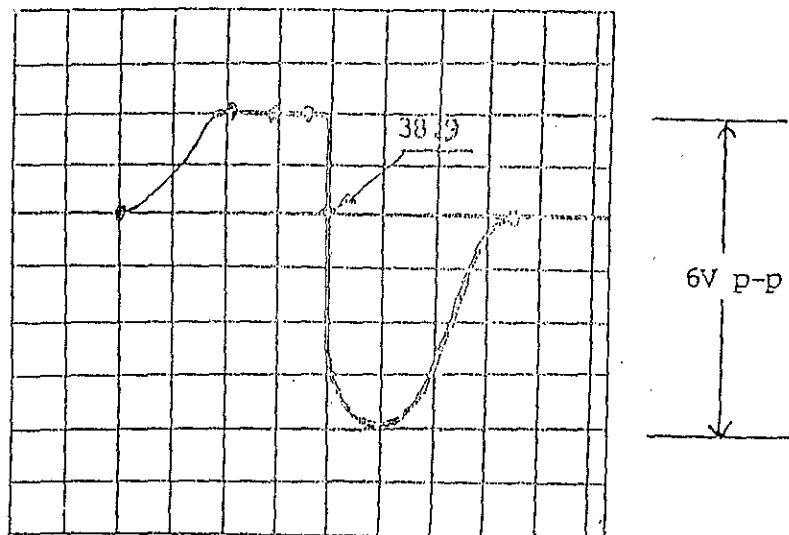
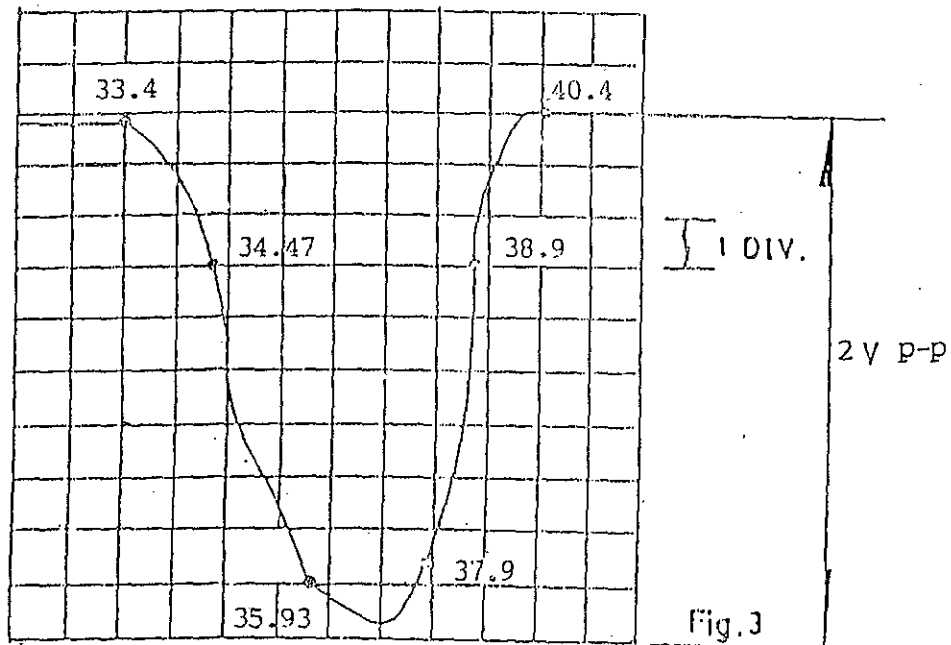


FIG 2

V.I.F. ALIGNMENT

1. Remove 1K resistor.
 2. Connect 100 OHM resistor parallel to R266
 3. Calibrate the division of sweep generator equal to 20 mV per div.
 4. The output of sweep generator should be -60 dB.
 5. Connect the waveform detector to TP201 and Ground
 6. Adjust A.G.C. Bias to maintain the waveform achieve 2V p-p. (about 4V).
 7. Adjust tuner converter coil to obtain waveform as Fig 3.
- D. soldering the pads 'H' and 'i'



FINE A.F.C. ALIGNMENT

1. Apply PAL I.F. signal (38.9 Mhz) modulated with a colour bar pattern to tuner test point.
2. The output of I.F. signal should be 80 dB.
3. Connect a digital voltmeter to TP203 and Ground.
4. Adjust L204 to obtain a reading of 4V.

B+ ADJUSTMENT

1. Connect a digital voltmeter to TPB+ and ground.
2. set brightness contrast and colour to minimum.
3. Adjust VR501 and obtain a reading of 112V.

AGC ALIGNMENT

1. Receive CH69 (UHF) and input field strength in 63dB + 3dB input.
2. Adjust VR201 to the point where noise has disappeared.

FOCUS ALIGNMENT

1. Set the brightness and contrast to middle position.
2. Recieve a monoscope pattern
3. Adjust focus control to obtain sharpest picture.

HORIZONTAL CIRCUIT ADJUSTMENT

1. Receive monoscope pattern input signal 80dBuV.
2. Adjust Vr202 to obtain the picture at centre

VERTICAL CIRCUIT ADJUSTMENT

1. Rreceive the monoscope pattern.
2. Adjust VR402 to obtain a normal picture

WHITE BALANCE ALIGNMENT STEP

1. Deguass the picture by deguassing coil if necessary.
2. Set VR601, VR602, VR603, VR604, VR605, and sub brightness (VR101) to middle position.
3. Set screen control, brightness, contrast and colour to minimum.
4. No R.F. signal need to apply
5. Connect 10uf capacitor between TP 'J' and ground.
6. Connect a digital meter between R610 and ground, then adjust VR101 to obtain DC160V. If DC 160V can't be obtained. Adjust the brightness control.
7. Slowly turn the screen control clockwise to a point where the horizontal line just illuminates.
8. Adjust VR603 to get a red horizontal line on CRT
9. Adjust VR604 to get a yellow horizontal line on CRT
10. Adjust VR605 to get a white horizontal line on CRT
11. Disconnect the 10 uf capacitor and apply a signal with a black and white picture.
12. Adjust VR601, VR602, VR603, VR604, VR605 to obtain uniformly white picture 9300 K.

SUB BRIGHTNESS ALIGNMENT

1. Receive a colour bar pattern.
2. Turn the brightness, contrast and colour to a minimum.
3. Adjust VR101 until the brightest bar can just be seen.

VOLTAGE TABLE FOR IC

| SYMBOL PIN NO. | U 201 TDA 8362 | SYMBOL PIN NO. | U 201 TDA 8362 | U 401 TDA 3653 | U 705 TDA 1013B |
|-------------------|-------------------|-------------------|-------------------|-------------------|--------------------|
| 1 | 7.8 | 43 | 3.8 | 1.1 | 0 |
| 2 | 5.6 | 44 | 2.9 | 0 | 7.6 |
| 3 | 5.6 | 45 | 3.9 | 1.2 | 16 |
| 4 | 5.5 | 46 | 3.9 | 0 | 15.6 |
| 5 | 7.9 | 47 | 2.5 | 15.6 | 1.2 |
| 6 | 3.8 | 48 | 4.7 | 25.6 | 6.7 |
| 7 | 3.3 | 49 | 1.2 | 1.2 | 2.2 |
| 8 | 1.7 | 50 | 3.5 | 5.8 | 2.8 |
| 9 | 0 | 51 | 4 | 25.4 | 0 |
| 10 | 7.6 | 52 | 6.6 | | |
| 11 | 0 | | | | |
| 12 | 3.2 | | | | |
| 13 | 4.2 | | | | |
| 14 | 3.3 | | | | |
| 15 | 3.4 | | | | |
| 16 | 0 | | | | |
| 17 | 3.6 | | | | |
| 18 | 2.1 | | | | |
| 19 | 2.1 | | | | |
| 20 | 2.1 | | | | |
| 21 | 0.2 | | | | |
| 22 | 3.4 | | | | |
| 23 | 3.4 | | | | |
| 24 | 3.4 | | | | |
| 25 | 1.6 | | | | |
| 26 | 1.6 | | | | |
| 27 | 5.5 | | | | |
| 28 | 3.9 | | | | |
| 29 | 3.9 | | | | |
| 30 | 3 | | | | |
| 31 | 2.9 | | | | |
| 32 | 4.4 | | | | |
| 33 | 4.2 | | | | |
| 34 | 3.6 | | | | |
| 35 | 2 | | | | |
| 36 | 7.9 | | | | |
| 37 | 0.6 | | | | |
| 38 | 1.2 | | | | |
| 39 | 2.7 | | | | |
| 40 | 3.8 | | | | |
| 41 | 2.3 | | | | |
| 42 | 2.8 | | | | |

NOTE: VOLTAGE ARE TAKEN UNDER TUNED CONDITION WITH
 CONTRAST: MAXIMUM POSITION
 BRIGHTNESS: MAXIMUM POSITION
 COLOUR: MAXIMUM POSITION
 SIGNAL INPUT: 80 DBUV
 CHANNEL SETTING: THE LAST CHANNEL OF UHF HIGH
 SIGNAL PATTERN: COLOUR BAR

VOLTAGE TABLE FOR IC

| SYMBOL PIN NO. | U 202 TDA 4661 | | | | |
|-------------------|-------------------|--|--|--|--|
| 1 | 5.2 | | | | |
| 2 | 0 | | | | |
| 3 | 0 | | | | |
| 4 | 0 | | | | |
| 5 | 1.4 | | | | |
| 6 | 0 | | | | |
| 7 | 0 | | | | |
| 8 | 0 | | | | |
| 9 | 5.2 | | | | |
| 10 | 0 | | | | |
| 11 | 2.9 | | | | |
| 12 | 2.9 | | | | |
| 13 | 0 | | | | |
| 14 | 1.3 | | | | |
| 15 | 0 | | | | |
| 16 | 1.3 | | | | |

NOTE: VOLTAGE ARE TAKEN UNDER TUNED CONDITION WITH
 CONTRAST: MAXIMUM POSITION
 BRIGHTNESS: MAXIMUM POSITION
 COLOUR: MAXIMUM POSITION
 SIGNAL INPUT: 80 DBUV
 CHANNEL SETTING: THE LAST CHANNEL OF UHF HIGH
 SIGNAL PATTERN: COLOUR BAR

VOLTAGE TABLE FOR IC

| SYMBOL PIN NO. | U 101 CTV 322 | U 102 24CO1B1 | U 405 7808 | U 501 7805 | U 402 7812 |
|-------------------|------------------|------------------|---------------|---------------|---------------|
| 1 | 4.3 | 0 | 12 | 12 | 15 |
| 2 | 0.1 | 5 | 0 | 0 | 0 |
| 3 | 4.7 | 0 | 8 | 5 | 12 |
| 4 | 2.4 | 0 | | | |
| 5 | 4.9 | 2.6 | | | |
| 6 | 2.5 | 3 | | | |
| 7 | 0 | 5 | | | |
| 8 | 4.5 | 5 | | | |
| 9 | 1.6 | | | | |
| 10 | 5 | | | | |
| 11 | 0 | | | | |
| 12 | 5.6 | | | | |
| 13 | 5 | | | | |
| 14 | 5 | | | | |
| 15 | 5 | | | | |
| 16 | 5 | | | | |
| 17 | 5 | | | | |
| 18 | 0.1 | | | | |
| 19 | 5 | | | | |
| 20 | 5 | | | | |
| 21 | 0 | | | | |
| 22 | 0 | | | | |
| 23 | 0 | | | | |
| 24 | 0 | | | | |
| 25 | 0 | | | | |
| 26 | 0.3 | | | | |
| 27 | -0.3 | | | | |
| 28 | 5 | | | | |
| 29 | 5 | | | | |
| 30 | 0 | | | | |
| 31 | 2.6 | | | | |
| 32 | 2.1 | | | | |
| 33 | 5 | | | | |
| 34 | 5.4 | | | | |
| 35 | 4.8 | | | | |
| 36 | 0 | | | | |
| 37 | 0 | | | | |
| 38 | 0 | | | | |
| 39 | 3 | | | | |
| 40 | 2.7 | | | | |
| 41 | 0 | | | | |
| 42 | 5 | | | | |

NOTE: VOLTAGE ARE TAKEN UNDER TUNED CONDITION WITH
 CONTRAST: MAXIMUM POSITION
 BRIGHTNESS: MAXIMUM POSITION
 COLOUR: MAXIMUM POSITION
 SIGNAL INPUT: 80dBuV
 CHANNEL SETTING: THE LAST CHANNEL OF UHF HIGH
 SIGNAL PATTERN: COLOUR BAR

VOLTAGE TABLE FOR TRANSISTOR

| SYMBOL | B (V) | C (V) | E (V) | SYMBOL | B (V) | C (V) | E(V) |
|--------|-------|-------|-------|--------|-------|-------|-------|
| Q101 | 0.6 | 1.2 | 0 | Q402 | -0.1 | 112.5 | 0 |
| Q102 | 0 | 0 | 0 | Q501 | 9.1 | 12.8 | 8.4 |
| Q103 | 0 | 4.6 | 0 | Q502 | 5.4 | 0 | 1.7 |
| Q104 | 0 | 11.9 | 0 | Q503 | 0 | 1.2 | 0 |
| Q105 | 0.6 | 0 | 0 | Q504 | -2.6 | 293 | 0.07 |
| Q106 | 12 | 0 | 12 | Q505 | 0.6 | 0.06 | 0 |
| Q107 | 12 | 0 | 12 | Q506 | 113.1 | 113.7 | 113.8 |
| Q108 | 11.1 | 11.7 | 12 | Q507 | 113.7 | 113.8 | 113 |
| Q201 | 2.3 | 11.7 | 1.6 | Q601 | 2.6 | 129.2 | 2.1 |
| Q202 | 1.4 | 4.8 | 0.8 | Q602 | 2.5 | 128.3 | 1.9 |
| Q204 | 3.1 | 7.3 | 2.4 | Q603 | 2.5 | 128.4 | 19 |
| Q205 | 2.3 | 7.7 | 1.7 | Q604 | 3.7 | 0 | 3.9 |
| Q207 | 0 | 6.3 | 0 | Q701 | 16.7 | 16.1 | 16.1 |
| Q208 | 3.6 | 7.9 | 2.9 | | | | |
| Q209 | 0 | 6.3 | 0 | | | | |
| Q210 | 0.7 | 0 | 0 | | | | |
| Q211 | 4.8 | 12 | 4.1 | | | | |
| Q401 | 0.5 | 0 | 0 | | | | |

NOTE: VOLTAGE ARE TAKEN UNDER TUNED CONDITION WITH
 CONTRAST: MAXIMUM POSITION
 BRIGHTNESS: MAXIMUM POSITION
 COLOUR: MAXIMUM POSITION
 SIGNAL INPUT: 80 DBUV
 CHANNEL SETTING: THE LAST CHANNEL OF UHF HIGH
 SIGNAL PATTERN: COLOUR BAR

Print Date : 23/12/94

Page Number : 1

<< B.O.M. PRICE LIST FOR CUSTOMER >> - CURRENCY (USD)

PRODUCT CODE : 932074-K00002-AT

DESCRIPTION : 9320C-1 PAL/BG W/SCART W/O TXTSONY GREY 240V SAA {MONO CHIP}

| ASSEMBLY NUMBER | DESCRIPTION |
|------------------|--|
| 155-000400-03-00 | COMMON PART FOR HANDSET ASS'Y |
| 155-000400-03-03 | NON-COMMON PART FOR R/C:9313 W/O S.TXT |
| 158-932074-K0-A0 | COMMON PART FOR CHASSIS ASS'Y (BG FTZ) |
| 158-932074-K0-A3 | NON-COM PART CHASSIS ASS'Y (BG) {1-SPK.} |
| 159-932074-K0-A0 | COMMON PART FOR CASING ASS'Y (BG FTZ) |
| 159-932074-K0-A3 | NON-COM PART FOR CASING ASS'Y(SONY GREY) |
| 163-932074-K0-A3 | NON-COM PART FOR PACKING ASS'Y (BG) |

** THIS SPARE LIST IS MADE FOR TECHNICAL / MAINTENANCE REFERENCE ONLY **

** THIS SPARE LIST IS MADE FOR TECHNICAL / MAINTENANCE REFERENCE ONLY **

Print Date : 23/12/94 PRODUCT CODE : 932074-K00002-AT
 Page Number : 2 DESCRIPTION : 9320C-1 PAL/BG W/SCART W/O TXTSONY GREY 240V SAA {MONO CHIP}

Component Description / Location
 Part

*** ASSEMBLY : 155-000400-03-00 COMMON PART FOR HANDSET ASS'Y

107-800455-46 455K HZ RESONATOR CSB455EB MURATA
 CF701

113-101005-17 CARBON FILM RESISTOR 100 OHM 1/16W +-5%
 R704,706

113-102005-17 CARBON FILM RESISTOR 1K OHM 1/16W +-5%
 R705

113-103005-17 CARBON FILM RESISTOR 10K OHM 1/16W +-5%
 R702

113-109005-17 CARBON FILM RESISTOR 1 OHM 1/16W +-5%
 R708,710

113-473005-17 CARBON FILM RESISTOR 47K OHM 1/16W +-5%
 R703

113-682005-17 CARBON FILM RESISTOR 6.8K OHM 1/16W +-5%
 R701

127-476042-03 ELECT. CAP. 47 MFD 16V +-20%
 C701

130-600101-00 INFRARED EMITTER EL-1L1 KODENSHI
 LED701

131-210719-29 TRANSISTOR 2SA719R/S MATSUSHITA
 Q702

131-230945-00 TRANSISTOR 2SC945 NEC
 Q701

133-803010-33 I.C. SAA3010T PHILIPS
 IC701

172-626006-42 UL 1007 TOP COAT WIRE AWG 26 80MM RED 10 X 10 MM
 FROM REMOTE PCB '3V' TO BATTERY CONTACT PLATE '+'

172-626008-40 UL 1007 TOP COAT WIRE AWG 26 80MM BLACK 10 X 10 MM
 FROM REMOTE PCB 'GND' TO BATTERY CONTACT PLATE '-'

172-726000-99 BARE WIRE 54MM
 W701-702

190-931300-02 REMOTE P.C.B. (190593)

514-200407-10 SELF-TAPPING SCREW 2 X 7 8/T (HARDEN)
 FOR HANDSET

516-260408-10 SELF-TAPPING SCREW 2.6 X 8 P/T(HARDEN)
 FOR HANDSET

773-036864-00 BATTERY CONTACT PLATE +VE

773-222001-00 BATTERY CONTACT PLATE (+VE,-VE) W/NICKEL PLATING

774-036862-00 BATTERY CONTACT SPRING -VE

810-041004-13 POLYBAG 4" X 10" X 0.04MM W/RE-CYCLING MARK
 FOR HANDSET

889-931310-00 HANDSET COVER PLATE
 FOR W/O LCD REMOTE

964-931301-00 SENSOR LENS

** THIS SPARE LIST IS MADE FOR TECHNICAL / MAINTENANCE REFERENCE ONLY **

Print Date : 23/12/94 PRODUCT CODE : 932074-K00002-AT
Page Number : 3 DESCRIPTION : 9320C-1 PAL/BG W/SCART W/O TXTSONY GREY 240V SAA {MONO CHIP}

Component Description / Location
Part

*** ASSEMBLY : 155-000400-03-03 NON-COMMON PART FOR R/C:9313 W/O S.TXT
849-931301-00 CONTACT RUBBER KEY PAD
892-931306-05 D/KEY PLATE - TEAC DESIGN (RC-543)
900-931310-01 HANDSET TOP CABINET - MOULDED BLACK
902-931310-01 HANDSET BOTTOM CABINET - MOULDED BLACK
910-931301-01 BATTERY DOOR - BLACK MOULDED

** THIS SPARE LIST IS MADE FOR TECHNICAL / MAINTENANCE REFERENCE ONLY **

Print Date : 23/12/94 PRODUCT CODE : 932074-K00002-AT
 Page Number : 4 DESCRIPTION : 9320C-1 PAL/BG W/SCART W/O TXTSONY GREY 240V SAA {MONO CHIP}

Component Description / Location
 Part

 *** ASSEMBLY : 158-932074-K0-A0 COMMON PART FOR CHASSIS ASS'Y (8G FTZ)

- 001-220027-07 FLYBACK TRANSFORMER FCM20B027 SAMSUNG
T402
- 012-102330-06 SEMI-FIXED RESISTOR EVND2AA 03B13 1KB
VR601,602
- 012-102340-06 SEMI-FIXED RESISTOR EVND8AA 03B13 1KB
VR402,501
- 012-103340-06 SEMI-FIXED RESISTOR EVND8AA 03B14 10KB
VR202
- 012-203340-06 SEMI-FIXED RESISTOR EVND8AA 03B24 20KB
VR101
- 012-502330-06 SEMI-FIXED RESISTOR EVND2AA 03B53 5KB
VR603,604,605
- 012-502340-06 SEMI-FIXED RESISTOR EVND8AA 03B53 5KB
VR201
- 101-190710-96 HORIZONTAL DRIVE TRANSFORMER R0710
T401
- 101-288820-95 LINE FILTER 70MH
T501
- 101-414025-94 SWITCHING POWER TRANSFORMER (HL4025B)
T502
- 102-370600-02 TANK COIL / AFC COIL COILS 707851
L204
- 105-100101-02 FIXED INDUCTIVE COIL 10UH +-10%
L102,205
- 105-109101-02 FIXED INDUTIVE COIL 1.0 UH 10%
L201,202
- 105-201106-02 CHOKE COIL 200UH 10% CH9012- 201K (ELEC PRODUCT)
L502
- 105-331101-02 FIXED INDUCTIVE COIL 330UH +-10%
L601
- 105-650052-13 LINEARITY COIL 65UH FOR 20" CRT
L401
- 105-689101-02 FIXED INDUCTIVE COIL 6.8UH 10%
L203
- 113-100105-17 CARBON FILM RESISTOR 10 OHM 1/4W +-5%
R209
- 113-101105-17 CARBON FILM RESISTOR 100 OHM 1/4W +-5%
R160,161,208,229,230,231,240,131
- 113-102105-17 CARBON FILM RESISTOR 1K OHM 1/4W +-5%
R106,138,139,157,216,221,225,233
- 113-102105-17 CARBON FILM RESISTOR 1K OHM 1/4W +-5%
R252,253,254,255,281,251,275
- 113-102205-12 CARBON FILM RESISTOR 1K OHM 1/2W +-5%
R420
- 113-102305-75 METAL OXIDE FILM RESISTOR 1K OHM 1W +-5%
R432
- 113-103105-17 CARBON FILM RESISTOR 10K OHM 1/4W +-5%
R102,103,105,140,201,415,115,249

** THIS SPARE LIST IS MADE FOR TECHNICAL / MAINTENANCE REFERENCE ONLY **

Print Date : 23/12/94 PRODUCT CODE : 932074-K00002-AT
 Page Number : 5 DESCRIPTION : 9320C-1 PAL/BG W/SCART W/O TXTSONY GREY 240V SAA {MONO CHIP}

| Component Part | Description / Location |
|----------------|---|
| 113-103105-17 | CARBON FILM RESISTOR 10K OHM 1/4W +-5% R424,425,508,528,154,141,256 |
| 113-103205-12 | CARBON FILM RESISTOR 10K OHM 1/2 +-5% R411 |
| 113-103405-75 | METAL OXIDE FILM RESISTOR 10K OHM 2W +-5% R526 |
| 113-104105-17 | CARBON FILM RESISTOR 100K OHM 1/4W +-5% R107,108,119,239,243,244,120,237 |
| 113-104205-12 | CARBON FILM RESISTOR 100K OHM 1/2W +-5% R521 |
| 113-104305-75 | METAL OXIDE FILM RESISTOR 100KOHM 1W +-5% R531 |
| 113-105001-67 | METAL FILM RESISTOR 1M OHM 1/16W +-1% R246 |
| 113-120305-75 | METAL OXIDE FILM RESISTOR 12 OHM 1W +-5% R512 |
| 113-120405-75 | METAL OXIDE FILM RESISTOR 12 OHM 2W +-5% R519 |
| 113-121105-17 | CARBON FILM RESISTOR 120 OHM 1/4W +-5% R262 |
| 113-122105-17 | CARBON FILM RESISTOR 1.2K OHM 1/4W +-5% R206,248,617,162 |
| 113-123105-17 | CARBON FILM RESISTOR 12K OHM 1/4W +-5% R210,713,721 |
| 113-124205-12 | CARBON FILM RESISTOR 120K OHM 1/2W +-5% R410 |
| 113-151105-17 | CARBON FILM RESISTOR 150 OHM 1/4W +-5% R223 |
| 113-152105-17 | CARBON FILM RESISTOR 1.5K OHM 1/4W +-5% R622,250 |
| 113-152205-12 | CARBON FILM RESISTOR 1K5 OHM 1/2W +-5% R610,611,612 |
| 113-153105-17 | CARBON FILM RESISTOR 15K OHM 1/4W +-5% R245,113 |
| 113-153405-75 | METAL OXIDE FILM RESISTOR 15K OHM 2W +-5% R604,605,606 |
| 113-154105-17 | CARBON FILM RESISTOR 150K OHM 1/4W +-5% R125 |
| 113-159405-42 | NON-FLAMMABLE FUSE RESISTOR 1.5 OHM 2W +-5% R620 |
| 113-181105-17 | CARBON FILM RESISTOR 180 OHM 1/4W +-5% R222 |
| 113-182105-17 | CARBON FILM RESISTOR 1.8K OHM 1/4W +-5% R207,506,602,274,621 |
| 113-183105-17 | CARBON FILM RESISTOR 18K OHM 1/4W +-5% R118 |
| 113-221105-17 | CARBON FILM RESISTOR 220 OHM 1/4W +-5% R104,142,238,213,421 |
| 113-221305-75 | METAL OXIDE FILM RESISTOR 220 OHM 1W +-5% R419 |

** THIS SPARE LIST IS MADE FOR TECHNICAL / MAINTENANCE REFERENCE ONLY **

Print Date : 23/12/94 PRODUCT CODE : 932074-K00002-AT
 Page Number : 6 DESCRIPTION : 93200-1 PAL/BG W/SCART W/O TXTSONY GREY 240V SAA {MONO CHIP}

| Component Part | Description / Location |
|----------------|--|
| 113-222105-17 | CARBON FILM RESISTOR 2.2K OHM 1/4W +-5% R130,224,272,151 |
| 113-222205-12 | CARBON FILM RESISTOR 2.2K OHM 1/2W +-5% R715 |
| 113-223101-67 | METAL FILM RESISTOR 22K OHM 1/4W +-1% R412,111,101 |
| 113-223105-17 | CARBON FILM RESISTOR 22K OHM 1/4W +-5% R109,110,114,143,144,146,158,124,150,525,278 |
| 113-224105-17 | CARBON FILM RESISTOR 220K OHM 1/4W +-5% R719 |
| 113-229105-17 | CARBON FILM RESISTOR 2.2 OHM 1/4W +-5% R279 |
| 113-229305-75 | METAL OXIDE FILM RESISTOR 2.2 OHM 1W +-5% R426,427 |
| 113-229405-75 | METAL OXIDE FILM RESISTOR 2.2 OHM 2W +-5% R503 |
| 113-243105-17 | CARBON FILM RESISTOR 24K OHM 1/4W +-5% R417 |
| 113-270405-75 | METAL OXIDE FILM RESISTOR 27 OHM 2W +-5% R513 |
| 113-272105-17 | CARBON FILM RESISTOR 2.7K OHM 1/4W +-5% R618,613,614,615,616,434 |
| 113-272205-12 | CARBON FILM RESISTOR 2.7K OHM 1/2W +-5% R403,520 |
| 113-273105-17 | CARBON FILM RESISTOR 27K OHM 1/4W +-5% R211,241,416 |
| 113-331105-17 | CARBON FILM RESISTOR 330 OHM 1/4W +-5% R509 |
| 113-332102-17 | CARBON FILM RESISTOR 3.3K OHM 1/4W +-2% R505,266 |
| 113-332105-17 | CARBON FILM RESISTOR 3.3K OHM 1/4W +-5% R152,153,235,269,433 |
| 113-332605-75 | METAL OXIDE FILM RESISTOR 3K3 OHM 5W +-5% R406 |
| 113-334305-75 | METAL OXIDE FILM RESISTOR 330KOHM 1W +-5% R514,404 |
| 113-338405-75 | METAL OXIDE FILM RESISTOR 0.330HM 2W +-5% R516 |
| 113-339105-17 | CARBON FILM RESISTOR 3.3 OHM 1/4W +- 5% R720 |
| 113-390605-75 | METAL OXIDE FILM RESISTOR 39 OHM 5W +-5% R517 |
| 113-391105-17 | CARBON FILM RESISTOR 390 OHM 1/4W +-5% R607,608,609 |
| 113-392105-17 | CARBON FILM RESISTOR 3.9K OHM 1/4W +-5% R414 |
| 113-393105-17 | CARBON FILM RESISTOR 39K OHM 1/4W +-5% R232 |
| 113-470105-17 | CARBON FILM RESISTOR 47 OHM 1/4W +-5% R220,204 |

** THIS SPARE LIST IS MADE FOR TECHNICAL / MAINTENANCE REFERENCE ONLY **

Print Date : 23/12/84 PRODUCT CODE : 932074-K00002-AT
 Page Number : 7 DESCRIPTION : 9320C-1 PAL/BG W/SCART W/O TXTSONY GREY 240V SAA {MONO CHIP}

| Component Part | Description / Location |
|----------------|---|
| 113-470205-12 | CARBON FILM RESISTOR 47 OHM 1/2W +-5% R405 |
| 113-470405-75 | METAL OXIDE FILM RESISTOR 47 OHM 2W +-5% R530 |
| 113-471105-17 | CARBON FILM RESISTOR 470 OHM 1/4W +-5% R601 |
| 113-471305-75 | METAL OXIDE FILM RESISTOR 470 OHM 1W +-5% R270 |
| 113-472105-17 | CARBON FILM RESISTOR 4.7K OHM 1/4W +-5% R228,205,247,422,511,267,227 |
| 113-473105-17 | CARBON FILM RESISTOR 47K OHM 1/4W +-5% R202,203,159,402,149,277 |
| 113-479505-75 | METAL OXIDE FILM RESISTOR 4.7 OHM 3W +-5% R716 |
| 113-479605-51 | WIRE WOUND CEMENT RES. 4.7 OHM5W +-5% R502 |
| 113-512105-17 | CARBON FILM RESISTOR 5.1K OHM 1/4W +-5% R276 |
| 113-561105-17 | CARBON FILM RESISTOR 560 OHM 1/4W +-5% R112 |
| 113-562105-17 | CARBON FILM RESISTOR 5.6K OHM 1/4W +-5% R724,156 |
| 113-563105-17 | CARBON FILM RESISTOR 56K OHM 1/4W +-5% R273 |
| 113-565205-92 | CARBON COMPOSITION RESISTOR 5.6M 1/2W +-5% R523,524 |
| 113-682102-17 | CARBON FILM RESISTOR 6.8K OHM 1/4W +-2% R504 |
| 113-682105-17 | CARBON FILM RESISTOR 6.8K OHM 1/4W +-5% R510,280 |
| 113-683105-17 | CARBON FILM RESISTOR 68K OHM 1/4W +-5% 'W046' TO 'D208 ANODE' |
| 113-688205-42 | FUSING RESISTOR 0.68 OHM 1/2W +-5% R518 |
| 113-688305-42 | FUSING RESISTOR 0.68 OHM 1W +-5% R529,408,409 |
| 113-750105-17 | CARBON FILM RESISTOR 75 OHM 1/4W +-5% R257,258,259,260,261,226 |
| 113-821105-17 | CARBON FILM RESISTOR 820 OHM 1/4W +-5% R212,431 |
| 113-822105-17 | CARBON FILM RESISTOR 8.2K OHM 1/4W +-5% R507,723,712 |
| 113-823105-17 | CARBON FILM RESISTOR 82K OHM 1/4W +-5% R418 |
| 113-824105-17 | CARBON FILM RESISTOR 820K OHM 1/4W +-5% R242,264 |
| 114-210200-01 | THERMISTOR (NICHICON ZPB53 BL 200C) R501 |
| 123-101340-93 | CERAMIC CAP. 100PF 50V +-5% (NPO) C103 |

** THIS SPARE LIST IS MADE FOR TECHNICAL / MAINTENANCE REFERENCE ONLY **

Print Date : 23/12/94 PRODUCT CODE : 932074-K00002-AT
 Page Number : 8 DESCRIPTION : 9320C-1 PAL/BG W/SCART W/O TXTSONY GREY 240V SAA (MONO CHIP)

| Component Part | Description / Location |
|----------------|---|
| 123-101350-50 | CERAMIC CAP. 100 PF 50V +-10% (SL TYPE) C116,117,118,119,121 |
| 123-102350-90 | CERAMIC CAP. 0.001 MFD 50V +-10% (B TYPE) C207,215,210,235,236,415,417,401 |
| 123-102850-10 | CERAMIC CAP. 0.001 MFD 2KV +-10% MATSUSHITA C604 |
| 123-103370-90 | CERAMIC CAP. 0.01 MFD 50V +80 -20% C120,208,209,125 |
| 123-104270-90 | CERAMIC CAP. 0.1 MFD 25V +80 -20% C110,111,112,127,226,227,228,231,244,242,748 |
| 123-104270-90 | CERAMIC CAP. 0.1 MFD 25V +80 -20% C245,246,258,263,427,429,430,519,520,734,750 |
| 123-150340-93 | CERAMIC CAP. 15 PF 50V +-5% (NPO) C214,249 |
| 123-152850-10 | CERAMIC CAP. 0.0015 MFD 2KV +-10% MATSUSHITA C433 |
| 123-202350-90 | CERAMIC CAP. 0.002 MFD 50V +-10% (B TYPE) C128 |
| 123-221350-50 | CERAMIC CAP. 220 PF 50V +-10% (SL TYPE) C601,602,603 |
| 123-221551-90 | CERAMIC CAP. 220 PF 500V +-10% MATSUSHITA C513 |
| 123-223370-90 | CERAMIC CAP. 0.022 MFD 50V +80-20% C211,261,234,237,250,256,232 |
| 123-270340-93 | CERAMIC CAP. 27PF 50V +-5% (NPO) C122,123 |
| 123-472350-90 | CERAMIC CAP. 0.0047 MFD 50V +-10% (B TYPE) C421,422 |
| 123-472551-90 | CERAMIC CAP. 0.0047 MFD 500V +-10% (B TYPE) MATSUSHITA C410,411,515 |
| 123-472552-90 | CERAMIC CAP. 0.0047 MFD 500V +-10% (B TYPE) SMALL SIZE C503,504,505 |
| 123-580340-93 | CERAMIC CAP. 68 PF 50V +-5% (NPO) C217 |
| 123-581350-50 | CERAMIC CAP. 580 PF 50V +-10% (SL TYPE) C423 |
| 123-821850-10 | CERAMIC CAP. 820 PF 2KV +-10% (SL TYPE) MATSUSHITA C516 |
| 126-104071-01 | MYLAR CAP. 0.1 MFD 50V +-10% C218,416,418,510,101,255 |
| 126-104101-31 | POLYPROPYLENE CAP. 0.1 MFD 100V +-10% C412 |
| 126-222071-01 | MYLAR CAP. 0.0022 MFD 50V +-10% C114,754,251 |
| 126-222151-41 | METALIZED POLYPROPYLENE CAP. 0.0022 MFD 1600V +-10% C402,511,405 |
| 126-223071-01 | MYLAR CAP. 0.022 MFD 50V +-10% C220 |
| 126-224071-01 | MYLAR CAP 0.22 MFD 50V +-10% C102,201,752 |

** THIS SPARE LIST IS MADE FOR TECHNICAL / MAINTENANCE REFERENCE ONLY **

Print Date : 23/12/94 PRODUCT CODE : 932074-K00002-AT
 Page Number : 9 DESCRIPTION : 9320C-1 PAL/BG W/SCART W/O TXTSONY GREY 240V SAA {MONO CHIP}

| Component Part | Description / Location |
|----------------|---|
| 126-332151-41 | METALIZED POLYPROPYLENE CAP. 0.0033 MFD 1600V +-10% C404 |
| 126-333071-01 | MYLAR CAP. 0.033 MFD 50V +-10% C507 |
| 126-392071-01 | MYLAR CAP. 0.0039 MFD 50V +-10% C213 |
| 126-472071-01 | MYLAR CAP. 0.0047 MFD 50V +-10% C247,253,254,736 |
| 126-473071-01 | MYLAR CAP. 0.047 MFD 50V +-10% C223,224 |
| 126-473201-31 | POLYPROPYLENE CAP. 0.047 MFD 200V +-10% C403 |
| 126-473211-41 | METALLIZED POLYPROPYLENE CAP 0.047 MFD 250V +-10% VDE C502,501 |
| 126-474071-01 | MYLAR CAP. 0.47 MFD 50V +-10% C222 |
| 126-474201-31 | POLYPROPYLENE CAP 0.47 MFD 200V +-10% C413 |
| 127-105071-05 | ELECT CAP. 1 MFD 50V +-10% (TIME CONSTANT) C419 |
| 127-105072-03 | ELECT. CAP. 1 MFD 50V +-20% C202,203,204,225,230,252,749,426,518 |
| 127-105132-03 | ELECT. CAP. 1 MFD 160V +-20% C414 |
| 127-106042-03 | ELECT. CAP. 10 MFD 16V +-20% C104,105,219,229,260,124,264,273 |
| 127-106072-03 | ELECT. CAP. 10 MFD 50V +-20% C509 |
| 127-106252-03 | ELECT. CAP. 10 MFD 250V +-20% C407 |
| 127-107042-03 | ELECT. CAP. 100 MFD 16V +-20% C431,432,521,428,605 |
| 127-107062-03 | ELECT. CAP. 100 MFD 35V +-20% C425 |
| 127-107132-03 | ELECT. CAP. 100 MFD 160V +-20% C408 |
| 127-107402-03 | ELECT. CAP. 100 MFD 400V +-20% C506 |
| 127-108052-03 | ELECT. CAP. 1000 MFD 25V +-20% C420,406,733 |
| 127-225042-03 | ELECT. CAP. 2.2 MFD 16V +-20% C205,126,262,259,257 |
| 127-225072-03 | ELECT. CAP 2.2 MFD 50V +-20% C216 |
| 127-226042-03 | ELECT. CAP. 22 MFD 16V +-20% C109,753 |
| 127-227042-03 | ELECT. CAP. 220 MFD 16V +-20% C221 |
| 127-227062-03 | ELECT. CAP. 220 MFD 35V +-20% C424,514 |

** THIS SPARE LIST IS MADE FOR TECHNICAL / MAINTENANCE REFERENCE ONLY **

Print Date : 23/12/94 PRODUCT CODE : 932074-K00002-AT
 Page Number : 10 DESCRIPTION : 9320C-1 PAL/BG W/SCART W/O TXTSONY GREY 240V SAA {MONO CHIP}

| Component Part | Description / Location |
|----------------|--|
| 127-335132-03 | ELECT CAP. 33 MFD 160V +-20% C517 |
| 127-476042-03 | ELECT. CAP. 47 MFD 16V +-20% C206,233,265,266,267,212 |
| 127-476072-03 | ELECT. CAP. 47 MFD 50V +-20% C745 |
| 127-476072-07 | ELECT.CAP. 47 MFD 50V +-20% NICHICON C508 |
| 127-477062-03 | ELECT CAP. 470 MFD 35V +-20% C434,751 |
| 130-134148-01 | SILICON DIODE IN4148 D101,102,105,114,111,112,113,116,208,114 |
| 130-134148-01 | SILICON DIODE IN4148 D210,408,217,117,118,119,209,103 |
| 130-310012-50 | DIODE BAX12A D407 |
| 130-310033-50 | DIODE BYD330 D403,404,405,510 |
| 130-310062-50 | DIODE BAW 62 D203,204,205,206,401,402 |
| 130-310095-50 | DIODE BYW95B D511 |
| 130-310133-50 | DIODE BYD33J D406,507,508,509 |
| 130-311441-64 | BRIDGE RECTIFIER 1J4B41 TOSHIBA D501 |
| 130-410039-01 | ZENER DIODE 3.9V D211 |
| 130-410051-01 | ZENER DIODE 5.1V 1/2W +-5% D212 |
| 130-410075-01 | ZENER DIODE 7.5V 1/2W D213 |
| 130-410082-01 | ZENER DIODE 8.2V D505 |
| 130-410574-00 | ZENER DIODE UPC 574J NEC OR KA33V SAMSUNG U502 |
| 130-411091-01 | ZENER DIODE 9.1V D506 |
| 130-512044-00 | LED 3MM RED 204HDC FOR LED601 |
| 131-111402-03 | TRANSISTOR ED1402C Q102,103,104,105,202,208,207,211,210,209 |
| 131-111602-03 | TRANSISTOR ED1602C (PHILIPS) Q106,107,108 |
| 131-170547-02 | TRANSISTOR BC 547B PHILIPS Q501,503 |
| 131-170548-02 | TRANSISTOR BC 548B PHILIPS. Q204,205 |
| 131-170557-02 | TRANSISTOR BC 557B PHILIPS Q502 |

** THIS SPARE LIST IS MADE FOR TECHNICAL / MAINTENANCE REFERENCE ONLY **

Print Date : 23/12/84 PRODUCT CODE : 932074-K00002-AT
 Page Number : 11 DESCRIPTION : 9320C-1 PAL/BG W/SCART W/O TXTSONY GREY 240V SAA {MONO CHIP}

| Component Part | Description / Location |
|----------------|---|
| 131-170558-02 | TRANSISTOR BC 558B PHILIPS Q604 |
| 131-190370-00 | TRANSISTOR BF 370 PHILIPS. Q201 |
| 131-190422-00 | TRANSISTOR BF422 PHILIPS Q601,602,603 |
| 131-190819-00 | TRANSISTOR BF 819 PHILIPS Q401 |
| 131-202508-82 | TRANSISTOR BU 2508 DF PHILIPS Q402 |
| 131-241266-00 | TRANSISTOR 2SD1266Q MATSUSHITA Q403 |
| 131-241431-00 | TRANSISTOR 2SD1431 TOSHIBA WITH MICA SHEET (24MM X 33MM) Q504 |
| 131-265401-00 | TRANSISTOR 2N 5401 PHILIPS Q506 |
| 131-265551-00 | TRANSISTOR 2N 5551 PHILIPS Q505 |
| 131-370135-00 | TANSISTOR BD 135 PHILIPS Q701 |
| 131-462369-00 | TRANSISTOR PH2369 PHILIPS Q101 |
| 131-480011-00 | TRANSISTOR BUT 11 PHILIPS Q507 |
| 133-104661-33 | I.C. TDA 4661 PHILIPS IC U202 |
| 133-201013-33 | I.C. TDA1013B PHILIPS U705 |
| 133-203653-33 | I.C. TDA3653B PHILIPS U401 |
| 133-207805-31 | I.C. L7805CV SGS U501 |
| 133-207812-31 | IC L7812CV SGS-THOMSON U402 |
| 136-500001-00 | REMOTE RECEIVER (KODENSHI HC-SZ01) OPT601 |
| 137-100000-31 | CRYSTAL 10 MHZ HOORAY X101 |
| 137-443618-20 | CRYSTAL 4.43 MHZ X201 |
| 144-041420-85 | POWER SW. 70080-115 TECHNOKEY (TV3) SW501 |
| 146-104614-13 | TACT SWITCH HOKURIKU S0,S1,S2,S10,S11,S12,S15,S16,S17,S22,S23,S24 |
| 160-101001-08 | PIN CONNECTOR 1 PIN PLUG STRAIGHT FOR CN601,CN501,502 |
| 160-102255-27 | PIN CONNECTOR 2 PINS PLUG STRAIGHT (UL) CN101 |
| 160-102805-08 | PIN CONNECTOR 2 PIN PLUG STRAIGHT CN503 |

** THIS SPARE LIST IS MADE FOR TECHNICAL / MAINTENANCE REFERENCE ONLY **

Print Date : 23/12/94 PRODUCT CODE : 932074-K00002-AT
 Page Number : 12 DESCRIPTION : 93200-1 PAL/BG W/SCART W/O TXTSONY GREY 240V SAA {MONO CHIP}

| Component Part | Description / Location |
|----------------|---|
| 160-104255-27 | PIN CONNECTOR 4 PINS PLUG CN103 |
| 160-104805-08 | PIN CONNECTOR 4 PIN PLUG STRAIGHT CN401 |
| 160-105255-27 | PIN CONNECTOR 5 PINS WAFER 2.5 PITCH CN201 |
| 160-108255-27 | PIN CONNECTOR 8 PINS PLUG CN102 |
| 161-540004-01 | CRT SOCKET ISH-01 IN CHANG SK601 |
| 161-583702-22 | 21 PIN SOCKET SK201 |
| 172-520014-10 | UL 1007 TOP COAT WIRE AWG 20 140MM BLACK 10 X 10 MM MAIN P.C.B. 'E1' TO 'E2' |
| 172-520036-40 | UL 1007 TOP COAT WIRE AWG 20 360MM BLACK 10 X 10MM CN402 '2' TO CRT PCB 'GND' |
| 172-526008-40 | UL 1007 TOP COAT WIRE AWG 26 80MM BLACK 10 X 10 MM U401 LUG TO P.C.B. 'M', Q402 LUG TO P.C.B. 'K' |
| 172-526008-40 | UL 1007 TOP COAT WIRE AWG 26 80MM BLACK 10 X 10 MM Q504 LUG TO P.C.B. 'L' |
| 172-526008-42 | UL 1007 TOP COAT WIRE AWG 26 80MM RED 10 X 10 MM MAIN P.C.B. 'Q' TO 'Q' |
| 172-526036-43 | UL 1007 TOP COAT WIRE AWG 26 360MM ORANGE 10 X 10MM CN402 '1' TO CRT PCB 'FF' |
| 172-526036-44 | UL 1007 TOP COAT WIRE AWG 26 360MM YELLOW 10 X 10MM CN402 '3' TO CRT P.C.B. '180V' |
| 172-830080-99 | FLAT BRIDED WIRE 1200MM CRT GROUND |
| 177-655263-05 | 5 PIN FLAT CABLE WIRE CN202 '1' TO CN203 '1',CN202 '2' TO CN203 '2' |
| 177-655263-05 | 5 PIN FLAT CABLE WIRE CN202 '3' TO CN203 '3',CN202 '4' TO CN203 '4' |
| 177-655263-05 | 5 PIN FLAT CABLE WIRE CN202 '5' TO CN203 '5' |
| 179-001010-00 | OIL SLEEVING 1 MM DIA. 20MM FOR D511,20MM FOR BR501,20MM FOR R411 |
| 179-001010-00 | OIL SLEEVING 1 MM DIA. 20MM FOR R516, 20MM FOR R406 |
| 179-105000-00 | UL PVC TUBE 5MM DIA L=60MM FOR AC LINE CORD |
| 182-233150-03 | FUSE T3.15A 250V F501 |
| 190-932000-P0 | CRT P.C.B. (301293) |
| 190-932003-P1 | MAIN P.C.B. (041194) |
| 191-100034-09 | 1 PIN SOCKET ASSM'Y L=220MM CRT GND TO CN601 |
| 191-100035-09 | 1 PIN SOCKET ASSM'Y FROM POWER SWITCH TO CN501 |
| 191-100036-09 | 1 PIN SOCKET ASSM'Y FROM POWER SWITCH TO CN502 |

** THIS SPARE LIST IS MADE FOR TECHNICAL / MAINTENANCE REFERENCE ONLY **

Print Date : 23/12/94 PRODUCT CODE : 932074-K00002-AT
 Page Number : 13 DESCRIPTION : 9320C-1 PAL/BG W/SCART W/O TXTSONY GREY 240V SAA {MONO CHIP}

| Component Part | Description / Location |
|----------------|---|
| 191-201001-02 | 2 PINS SOCKET ASS'Y L=160MM CN101 '1' TO POWER SWITCH |
| 191-201001-02 | 2 PINS SOCKET ASS'Y L=160MM CN101 '2' TO POWER SWITCH |
| 191-500048-09 | 5 PIN SOCKET ASSM'Y CN201 '1' TO CRT P.C.B. 'A' |
| 191-500048-09 | 5 PIN SOCKET ASSM'Y CN201 '2' TO CRT P.C.B. 'B' |
| 191-500048-09 | 5 PIN SOCKET ASSM'Y CN201 '3' TO CRT P.C.B. 'C' |
| 191-500048-09 | 5 PIN SOCKET ASSM'Y CN201 '4' TO CRT P.C.B. 'D' |
| 191-500048-09 | 5 PIN SOCKET ASSM'Y CN201 '5' TO CRT P.C.B. 'E' |
| 191-801005-07 | 8 PINS SOCKET ASS'Y L=200MM FOR CN102 '1' TO CH. PCB 'G', '2' TO 'H', '3' TO 'I' |
| 191-801005-07 | 8 PINS SOCKET ASS'Y L=200MM '4' TO 'J', '5' TO 'K', '6' TO 'L', '7' TO 'M', '8' TO 'N' |
| 504-305006-00 | MACHINE SCREW 3 X 6 B/M(BLACK) FOR U402 |
| 504-305012-10 | MACHINE SCREW 3 X 12 B/M FOR HEAT SINK (B) |
| 517-303312-10 | SELF-TAPPING SCREW 3 X 12 W/A W/H=7MM (HARDEN) FOR HEAT SINK (A) , (C) |
| 520-305025-55 | NUT M3 T=2.5 OD=5.5 FOR Q402 |
| 580-101261-01 | CABLE TIE L=100MM FOR CRT BOARD , CONNECTOR ,SPEAKER |
| 746-063101-00 | TEST PIN:TOTAL LENGTH 18.6MM THK:0.8MM MAIN P.C.B. 'F', 'G',MAIN P.C.B. 'J' |
| 750-063101-00 | SOLDERING LUG LEG:8X4MM FOR U401,Q402,Q501 |
| 766-686801-00 | FUSE HOLDER |
| 779-882001-01 | IRON HEAT SINK (D) FOR U402 |
| 781-882001-02 | ALUMINIUM HEAT SINK (B). FOR Q402 |
| 781-882102-02 | ALUMINIUM HEAT SINK (A) FOR Q504 |
| 781-892001-00 | ALUMINIUM HEAT SINK (C) FOR U401 |
| 783-931304-00 | SHIELD CAN |
| 783-931305-00 | SHIELD CAN COVER |
| 840-051030-11 | RUBBER PAD (ONE SIDE W/TAPE) 3 UNDER POWER TRANSFORMER T901.3 FOR FBT |
| 840-051030-11 | RUBBER PAD (ONE SIDE W/TAPE) 3 FOR HEAT SINK OF VERTICAL D/P IC. |
| 840-051030-11 | RUBBER PAD (ONE SIDE W/TAPE) 1 FOR BETWEEN HEAT SINK AB ON COPPER SIDE |

** THIS SPARE LIST IS MADE FOR TECHNICAL / MAINTENANCE REFERENCE ONLY **

Print Date : 23/12/94

PRODUCT CODE : 932074-K00002-AT

Page Number : 14

DESCRIPTION : 9320C-1 PAL/BG W/SCART W/O TXTSONY GREY 240V SAA {MONO CHIP}

Component Description / Location
Part

929-892001-00 LED HOLDER BKT FOR CIRCLE LED
 FOR LED601

** THIS SPARE LIST IS MADE FOR TECHNICAL / MAINTENANCE REFERENCE ONLY **

Print Date : 23/12/94 PRODUCT CODE : 932074-K00002-AT
 Page Number : 15 DESCRIPTION : 9320C-1 PAL/BG W/SCART W/O TXTSONY GREY 240V SAA (MONO CHIP)

Component Description / Location
 Part

-
- *** ASSEMBLY : 158-932074-KO-A3 NON-COM PART CHASSIS ASS'Y (BG) {1-SPK.}
- 003-131424-02 TUNER OSCAR UVE33-W24/R16-3649MITSUMI
 UV201
- 107-105500-65 SOUND TRAP CERAMIC FILTER 5.5MHZ TPS-5.5MB MURATA
 CF201
- 107-305500-15 SOUND BYPASS CERAMIC FILTER 5.5MHZ SFE-5.5MB MURATA
 CF204
- 107-738916-00 SAW FILTER TSF-5316 SANYO
 SAW201A
- 113-101105-17 CARBON FILM RESISTOR 100 OHM 1/4W +-5%
 R134,135,136,137
- 113-103105-17 CARBON FILM RESISTOR 10K OHM 1/4W +-5%
 R155
- 113-224105-17 CARBON FILM RESISTOR 220K OHM 1/4W +-5%
 R155
- 123-222456-41 CERAMIC CAP. 0.0022 MFD 400V +-20% ECK-DNS222MEX MATSUSHI
 C512
- 123-223370-90 CERAMIC CAP. 0.022 MFD 50V +-80-20%
 C238
- 123-470340-93 CERAMIC CAP. 47 PF 50V +-5% (NPO)
 C270
- 126-104071-01 MYLAR CAP. 0.1 MFD 50V +-10%
 C240
- 126-224071-01 MYLAR CAP 0.22 MFD 50V +-10%
 C241
- 127-476042-03 ELECT. CAP. 47 MFD 16V +-20%
 C239
- 130-134148-01 SILICON DIODE IN4148
 D121
- 133-100322-33 PHILIPS IC PCA CTV3228
 U101
- 133-102411-31 I.C. ST24C1AB1 SGS
 U102
- 133-108362-33 I.C. TDA 8362 PHILIPS
 U201
- 160-102255-27 PIN CONNECTOR 2 PINS PLUG STRAIGHT (UL)
 CN701
- 171-550084-02 84" AC LINE CORD (END-CUT)SAA APPW/7.5A PLUG.
- 172-626022-46 UL 1007 TOP COAT WIRE AWG 26 220MM BLUE 10 X 10 MM
 MAIN P.C.B. 'R2' TO 'R2'
- 172-726000-99 BARE WIRE 54MM
 W001-008,015,017-027,029-030,032-040,042-046
- 172-726000-99 BARE WIRE 54MM
 W063-066,092-093,099,103-105,095-097,107,110
- 172-726000-99 BARE WIRE 54MM
 W048-050,053-055,057-061,070-078,080,082-086,089
- 190-932000-10 SENSOR P.C.B. (161293)
 FOR OPT601,LED601
- 190-932000-P5 CHANNEL P.C.B. (060894)

** THIS SPARE LIST IS MADE FOR TECHNICAL / MAINTENANCE REFERENCE ONLY **

Print Date : 23/12/94

PRODUCT CODE : 932074-K00002-AT

Page Number : 16

DESCRIPTION : 9320C-1 PAL/BG W/SCART W/O TXTSONY GREY 240V SAA {MONO CHIP}

Component Description / Location
Part

191-401012-07 4 PIN SOCKET ASS'Y L=220MM
 CN103 '1' TO SENSOR P.C.B. 'A'
191-401012-07 4 PIN SOCKET ASS'Y L=220MM
 CN103 '2' TO SENSOR P.C.B. 'B'
191-401012-07 4 PIN SOCKET ASS'Y L=220MM
 CN103 '3' TO SENSOR P.C.B. 'C'
191-401012-07 4 PIN SOCKET ASS'Y L=220MM
 CN103 '4' TO SENSOR P.C.B. 'D'

** THIS SPARE LIST IS MADE FOR TECHNICAL / MAINTENANCE REFERENCE ONLY **

Print Date : 23/12/94

PRODUCT CODE : 932074-K00002-AT

Page Number : 17

DESCRIPTION : 9320C-1 PAL/BG W/SCART W/O TXTSONY GREY 240V SAA (MONO CHIP)

Component Description / Location
Part

*** ASSEMBLY : 159-932074-K0-A0 COMMON PART FOR CASING ASS'Y (BG FTZ)
008-550201-05 DEGAUSSING COIL 60T 44MM X 34 MM (W/FIVE LAYERS OF TAPE)
CN902
504-305005-10 MACHINE SCREW 3 X 6 B/M
FOR POWER SWITCH BKT.MTG
514-400414-10 SELF-TAPPING SCREW 4 X 14 B/T (HARDEN)
FOR FLYBACK
514-400425-10 SELF-TAPPING SCREW 4 X 25 B/T (HARDEN)
FOR CAB FRONT & REAR
515-303408-10 SELF-TAPPING SCREW 3 X 8 W/B/T (HARDEN)
3 FOR CHANNEL AND VOLUME KNOB
524-932901-01 CRT MOUNTING SCREW 7 X 40 VP (HARDEN)
FOR CRT MTG
622-882001-00 FELT PAPER ONE SIDE W/TAPE 10 X 2 X 0.3MM
BACK CAB
622-882802-00 FELT L240 X W17 X T0.5MM W/TAPE
FOR REAR CAB.
744-881301-00 SPRING FOR C.R.T. MOUNTING 5.2 X 42 X 0.6MM
834-230801-00 RUBBER WASHER OD=23 , ID=8 , T=1.0
FOR CRT MTG
840-011024-21 PAD CORD L240 X W10 X T1 MM W/TAPE
BETWEEN CRT AND FRONT CAB.
840-051030-11 RUBBER PAD (ONE SIDE W/TAPE)
902-932012-01 BACK CABINET (C)
954-882100-00 AC LINE CORD CLIP
954-892001-00 HIGH VOLTAGE SPACER
FOR CRT
954-931301-00 STUD POST BLACK ABS
FOR FRONT CAB

** THIS SPARE LIST IS MADE FOR TECHNICAL / MAINTENANCE REFERENCE ONLY **

Print Date : 23/12/94 PRODUCT CODE : 932074-K00002-AT
Page Number : 18 DESCRIPTION : 9320C-1 PAL/BG W/SCART W/O TXTSONY GREY 240V SAA (MONO CHIP)

Component Description / Location
Part

*** ASSEMBLY : 159-932074-K0-A3 NON-COM PART FOR CASING ASS'Y(SONY GREY;
002-120001-45 CRT 20" A48KRD82X09 SAMSUNG (SOUTH HEMISPHERE CRT)
166-463023-4E SPEAKER 2" X 3-1/2" 16 OHM 3W K.T.
179-105000-00 UL PVC TUBE 5MM DIA
 FOR SPEAKER
186-227503-14 BATTERY 3A
191-200044-09 2 PIN SOCKET ASSM'Y L=440MM
 CN701 '1' TO SPK '+', '2' TO SPK '-'
515-303408-10 SELF-TAPPING SCREW 3 X 8 W/B/T (HARDEN)
 FOR REMOTE P.C.B.
515-303410-10 SELF-TAPPING SCREW 3 X 10 W/B/T (HARDEN)
 4 FOR SPEAKER MTG., 2 FOR POWER SWITCH
517-304308-10 SELF-TAPPING SCREW 3 X 8 P/W/A(HARDEN)
 FOR CHANNEL P.C.B.
669-882001-0K RATING LABEL - TEAC DESIGN 240V
703-932001-00 SPEAKER GRILLE (LEFT) - BLACK DOUBLE SIDE W/SPRAY {NEW}
723-932001-00 POWER SWITCH BRACKET
777-881301-00 SPRING IN 10 X L12
884-882020-02 JACK COVER-TEAC DESIGN WHI SS.W/21 PIN SOCKET HOLE
884-932054-01 PRESET PLATE (C-1) - BLACK W/ L.GREY S.S. ENG STD (8 KEYS)
889-932010-00 V.HOLE COVER PLATE
900-932012-02 FRONT CABINET (C-1) -SONY GREY SPRAY W/GOLD S.S. ENG STD
917-932011-01 REMOTE LENS (C-1) - RED W/GOLDS.S. ENG STD
919-932011-08 PRESET DOOR (C-1) -TEAC DESIGN (W/SONY GREY FINISHING)
939-881302-00 POWER SWITCH ADAPTOR
977-932010-00 CHANNEL AND VOLUME KNOB
991-932020-00 POWER KNOB (C-1)

** THIS SPARE LIST IS MADE FOR TECHNICAL / MAINTENANCE REFERENCE ONLY **

Print Date : 23/12/94
Page Number : 19

PRODUCT CODE : 932074-K00002-AT
DESCRIPTION : 9320C-1 PAL/BG W/SCART W/O TXTSONY GREY 24GV SAA {MONO CHIP}

Component Description / Location
Part

*** ASSEMBLY : 163-932074-K0-A3 NON-COM PART FOR PACKING ASS'Y (BG)
610-932011-02 GIFT BOX - TEAC DESIGN W/HANDEL
663-230755-94 SERIAL NO.LABEL - OC:GT-755/94
1 PC STUCK ON CTN, 1 PC STUCK ON RATING LABEL
670-932000-67 INSTRUCTION MANUAL - TEAC DESIGN (40 PROG.)
678-881303-04 TOTAL CARE STICKER 1
678-881303-05 TOTAL CARE STICKER 2
678-932004-01 SCREEN STICKER - TEAC DESIGN {MDL NO.CT-M487}
690-922139-01 WARRANTY CARD- TEAC (A) DESIGN {MDL:CT-M511N}
693-932001-06 EAN DORD LABEL - 9313060005853
800-932011-00 POLYFOAM - TOP LEFT
800-932012-00 POLYFOAM - TOP RIGHT
800-932013-00 POLYFOAM - BOTTOM LEFT
800-932014-00 POLYFOAM - BOTTOM RIGHT
810-041004-13 POLYBAG 4" X 10" X 0.04MM W/RE-CYCLING MARK
FOR HANDSET
810-051104-13 POLYBAG 5" X 11" X 0.04 MM W/ RE-CYCLING MARK
FOR AC LINE CORD
810-091504-13 POLYBAG 9" X 15" X 0.04MM W/ RE-CYCLING MARK
FOR INSTRUCTION MANUAL
810-373704-04 POLYBAG 37" X 37" X 0.04MM THKW/PUNCHING HOLES{P.O.MATERIA
FOR UNIT
826-301505-00 FOAM SHEET 30" X 16" X 0.5MM THK.
FOR TOP
826-342005-00 FOAM SHEET - 34" X 20" X 0.5MM
FOR BOTTOM

